

A photograph of two elderly women with white hair, smiling and looking at each other on a boat. They are wearing light blue shirts. The background is a body of water.

DIFFERENT TYPES OF DENTURES

BRONZE CONVENTIONAL REMOVABLE DENTURE

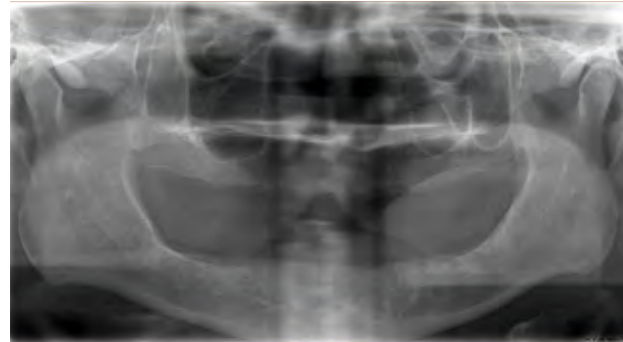
PRO'S

- Very affordable

CONS

- Needs good bone for support
- Loose fit in the mouth
- Palate is covered by Acrylic
- More likely to get ulcers from the movement of the dentures
- No sleeping with the dentures allowed]Food may get trapped
- Puts pressure on gums underneath
- Highest rate of bone loss with these dentures
- Needs to be replaced every 2 years

X-RAY OF NO TEETH



MAKE AN APPOINTMENT

EMERGENCY +27 60 943 9433 | **TEL** +27 12 348 0665 | **EMAIL** info@ilovemysmile.co.za | **ADDRESS** 455A Rodericks Street, Lynnwood, Pretoria

SILVER ACRYLIC REMOVABLE OVER DENTURE (SNAP – ON)

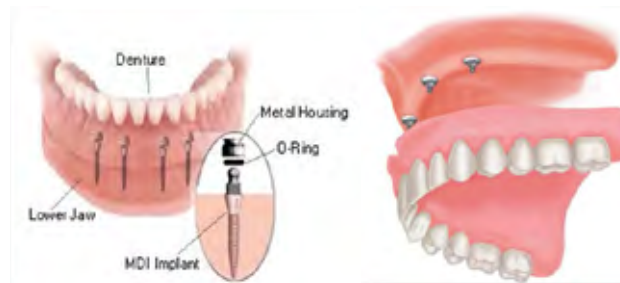
PRO'S

- More stable than Conventional Dentures
- Very Affordable procedure for more stability

CONS

- Tissue bearing in areas without Implants
- Good Bone is still essential
- Still likely to get ulcers from the pressure on the gums
- Food underneath dentures still an irritation
- No sleeping with the dentures
- High risk of bone loss where no Implants are placed
- More maintenance to the retention units are needed
- Needs to be replaced every 2 years
- Palate is still covered with Acrylic

X-RAY WITH IMPLANTS



MAKE AN APPOINTMENT

EMERGENCY +27 60 943 9433 | **TEL** +27 12 348 0665 | **EMAIL** info@ilovemysmile.co.za | **ADDRESS** 455A Rodericks Street, Lynnwood, Pretoria

GOLD 1 FIXED REMOVABLE STRUCTURE

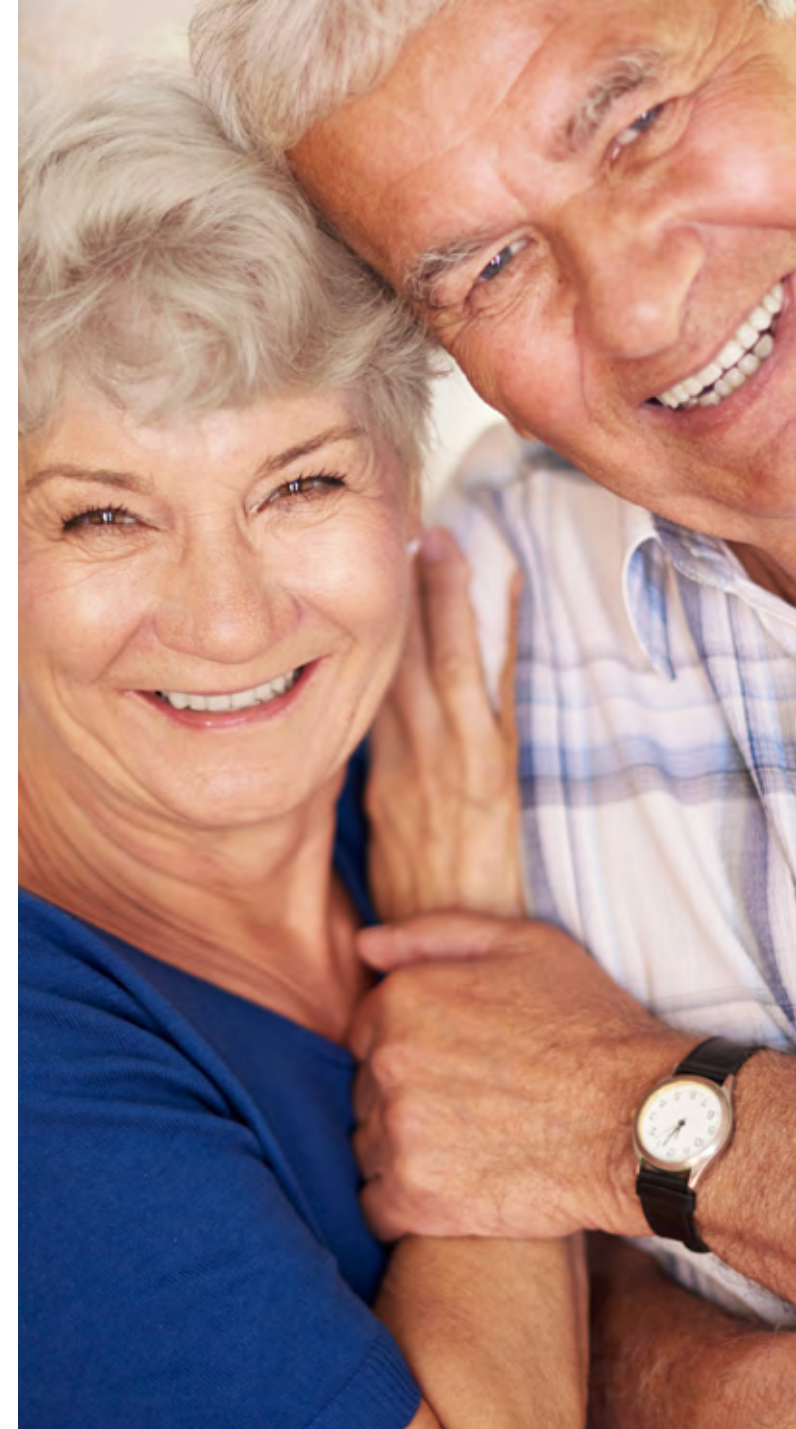
PRO'S

- Not tissue bearing
- Supported by implants
- Food collection underneath denture is not a problem
- Solution for patients with more tissue loss
- Dentures doesn't cause ulcers in the mouth
- Removable for cleaning of dentures
- Less bone loss occur than with conventional dentures
- Low maintenance costs
- Biting and chewing forces are much better
- Palate is not covered by Acrylic

CONS

- Made of Acrylic
- Acrylic part needs to be replaced every 5-6years
- Bit more pricey

X-RAY WITH IMPLANTS



MAKE AN APPOINTMENT

EMERGENCY +27 60 943 9433 | TEL +27 12 348 0665 | EMAIL info@ilovemysmile.co.za | ADDRESS 455A Rodericks Street, Lynnwood, Pretoria

GOLD 2

FIXED ACRYLIC STRUCTURE

PRO'S

- Not tissue bearing
- Supported by Implants
- Food collection underneath denture is not a problem
- Solution for patients with more tissue loss
- Dentures doesn't cause ulcers in the mouth
- Removable for cleaning of dentures
- Less bone loss occur than with conventional dentures
- Can sleep with dentures
- Low maintenance costs
- Biting and chewing forces are much better
- Palate is not covered by Acrylic

CONS

- Made of Acrylic
- Acrylic part needs to be replaced every 5-6 years
- Bit more pricey

X-RAY WITH IMPLANTS



MAKE AN APPOINTMENT

EMERGENCY +27 60 943 9433 | TEL +27 12 348 0665 | EMAIL info@ilovemysmile.co.za | ADDRESS 455A Rodericks Street, Lynnwood, Pretoria

PLATINUM FIXED PORCELAIN STRUCTURE

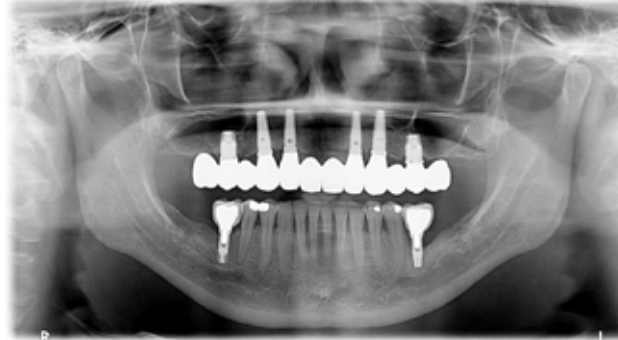
PRO'S

- To a patient's advantage
- Very comfortable
- Made out of strong Porcelain
- Without gum effect if aesthetically allowed
- With gum effect if necessary
- Nearest to natural teeth with today's technology
- Porcelain structure that is fixed to implants
- Palate is not covered by material
- Very good aesthetic results

CONS

- Bit more pricey

X-RAY WITH IMPLANTS



MAKE AN APPOINTMENT

EMERGENCY +27 60 943 9433 | TEL +27 12 348 0665 | EMAIL info@ilovemysmile.co.za | ADDRESS 455A Rodericks Street, Lynnwood, Pretoria